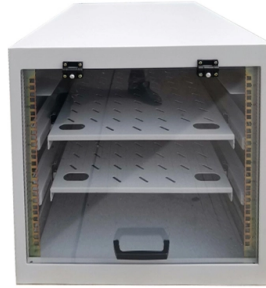


Distribution Box Production Requirements



Overview

Distribution boxes and switch boxes shall be manufactured from cold-rolled steel sheet or flame-retardant insulating material. Steel Thickness: Switch box enclosures: ≥ 1.0 mm. Before production begins, our engineers create precise CAD drawings and 3D models of the distribution box. Output: Design documents including material thickness, dimensions, IP/NEMA protection level, and component. The box production process for electrical enclosures is a systematic workflow ensuring the manufacturing of high-quality electrical boxes, meter boxes, cabinets, and GGD enclosures. This guide details each step—from receiving production orders to final sign-off—along with key considerations and. As a leading manufacturer of high- and low-voltage electrical equipment that strictly follows the IEC, GB/T, and ISO9001 standards, Chuanli specializes in producing high-performance cable distribution boxes, including outdoor equipment and customized distribution boxes solutions. Distribution box refers to the equipment used in the power distribution system to distribute, protect, and control electrical energy. 0 mm) The enclosure surface shall receive anti-corrosion.

Article Content

Leading production process for distribution boxes

Learn the step-by-step distribution box manufacturing process—from design and material selection to assembly and testing. E-abel provides high-quality electrical

Requirements for internal components of distribution boxes for ...

The humble distribution box has transformed from simple metal cabinets to sophisticated safety systems. By decoding and implementing these requirements, manufacturers don't just sell products -

Technical requirements for high and low voltage

The components in the box should be installed tightly, the coating should not slip or be damaged, and there should be anti-loosening measures, and the fasteners

Distribution box designing and production |

The production process takes place in all cases under a strict quality control, according to the technology instruction we elaborated. We also perform the individual test and the required

The Complete Guide to Distribution Box: Installation, Types & More

Calculate the total electrical load and add 25% for future growth. Consider physical space requirements and accessibility needs when selecting enclosure size. What's the difference between

Technical Requirements for Distribution Box in Electrical Industry

Different industries, different products have different technical requirements, in the electrical industry, distribution boxes, distribution boxes are no exception, distribution boxes, distribution boxes are also

Automatic Power Distribution Box Production Line

This production line is equipment for production of distribution boxes. The strip coil to be processed is manually placed on the uncoiler, and then corrected and tensioned.

Brief Introduction To The Requirements Of Distribution Box

Due to the construction of distribution box, distribution cabinet, construction distribution box and other facilities, the operation and development of internal

Latest Requirements for Distribution Box Installation under the US

The Heart of Your Electrical System Think of your home's distribution box as the Grand Central Station of your electrical system. Just like travelers need clear pathways and safety

Manufacturing Requirements for Electrical Distribution Box & Switch Box ...

Upon delivery, electrical products must be verified for: Manufacturing License, Product Certificate of Compliance (CoC), Product Manual, and Factory Test Records.
(2) Installation

Manufacturing Requirements for Electrical Distribution Box & Switch

The MDB shall also be equipped with: a Voltmeter, an Ammeter, a kWh Meter (Energy Meter), and other required instruments. Installation of dedicated energy metering shall comply with

Contact Us

For more information, pricing, or custom solutions, please contact us:

Website: <https://activa.net.pl>

Email: sales@activa.net.pl

Phone: +48 662 748 193

Address: ul. Cybernetyki 7B, 02-677 Warsaw, Poland

This document is for informational purposes only. Specifications subject to change without notice.

