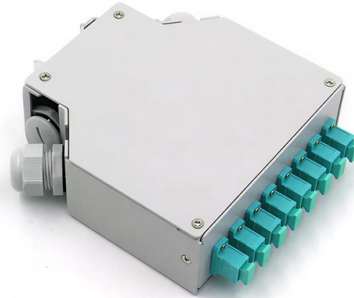


Fiber optic cables cannot be routed through cable trays



Overview

While there are several specific types of listings for power cables, specifically for tray applications, there is no equivalent tray rating for optical fiber cables. According to the 2014 National Electric Code® (NEC), any listed optical fiber cable is acceptable. The purpose of this AE Note is to outline the use of fiber optic cables in “tray rated” environments. NEC section 300-8 does not permit any tube, pipe, or equal for water, air gas, drainage, steam, or any service other than electrical in raceways or cable trays containing. Conductive optical fiber cables aren't permitted to occupy a cable tray or raceway with electric light, power or Class 1 circuits [770. Recommendations for Fiber Optic Cable Installation Where reels are supplied with protective material fitted over the cable, the protection should remain in place until the cable will be installed. During installation, all curvatures should be smooth. Outdoor cable may be direct buried, pulled or blown into conduit or innerduct, or installed aerially between poles. " This is in the "MIXING FIBER and ELECTRICAL".

Article Content

All AI Data Center Interconnects Will Be Optical Within 5 Years

All the overhead racks with bright yellow cables are fiber optics. We are on the verge of several more transitions that will result in all high-bandwidth data interconnects becoming optical

The FOA Reference For Fiber Optics-Installing Fiber

Cable ties used with many cables, especially when tightened with an installation tool, are harmful to fiber optic cables, causing attenuation and potential fiber breakage.

fiber optic cable in tray with MC cable.

Conductive optical fiber cables shall not be permitted to occupy the same cable tray or raceway with conductors for electric light, power, Class 1, non?power-limited fire alarm, Type ITC, or

Raceways, Cable Routing Assemblies, and Cable Trays for Optical

Nonconductive optical fiber cables can be installed without adhering to certain fill requirements, while those installed with power conductors must comply. Additionally, optical fiber cables are allowed in

Fiber Optic Cable Between Buildings: Business Planning Guide

When businesses connect multiple buildings, fiber optic cable installation becomes the most reliable solution for high-speed and stable connectivity. However, running fiber optic cable between buildings

Best Practices for Pulling Fiber Optic Cable

The following article explores best practices when pulling fiber optic cables and cable assemblies. Following these guidelines will help protect your system's optical performance, reduce

Cable Trays and Optical Cables

According to the 2014 National Electric Code® (NEC), any listed optical fiber cable is acceptable for a tray application. Cable trays are frequently used for both power and communications

FTTH Butterfly Optic Cable Manufacturers, Custom Factory

Butterfly optical cables, as the name suggests, exhibit a unique design reminiscent of butterfly wings, emphasizing a unique and efficient optical connection method. FTTH is a communication technology

The Complete Step-by-Step Guide to Fiber Optic Splicing

As fiber optic connections become increasingly mainstream, the need to connect fiber optic cables to one another — or splicing — is also on the rise. In this guide,

How to Protect Fiber Optic Cables - A Beginner's Guide

Why Fiber Protection Matters How fiber transmits signals Inside a fiber optic cable, there is a very thin glass core. Light signals travel through this core by continuous reflection. This structure

Electrical and Fiber Optic Cable Management

These cable management products offer a choice of methods to secure, route, label, and bundle electrical cables and fiber optic patch cables. Click the options in

Cable Tray Questions | Cable Tray Institute

Question 1: Can mechanical utility piping or tubing containing water or compressed air be installed in cable trays with electrical cables? Answer: No. Cable trays are a support system for electrical cables,

Rack Mount Fiber Termination Box With 12 Port, 12

Cables enter from the rear, while fiber patch cords are routed out through the front adapter panel for efficient connectivity. The rack mount fiber patch panel delivers

10 Costly Fiber Optic Cable Installation Mistakes to Avoid in 2026

Avoid costly fiber optic installation failures. Learn the 10 critical mistakes in splicing, bend radius, connector cleaning, and cable handling that ruin enterprise network performance.

Optical Fiber Cable Installation Guideline

In order to effectively pull cable without damaging the fiber, it is necessary to identify the strength material and fiber location within the cable. Then, use the method of attachment that pulls most

Cables Allowed in Tray

This test involves loading multiple cables in a vertical section of cable tray and igniting the cable at the base of the tray. The cable passes the test if it does not propagate the fire.

fiber optic cable installation . | Eng-Tips

"Nonconductive optical fiber cables, but not conductive optical fiber cables, can occupy the same cable tray or raceway as conductors for electric light, power and Class 1 circuits operating

Fiber Optic Patch Panel Guide

A fiber optic patch panel serves as a centralized, passive hardware enclosure that organizes, terminates, and protects fiber optic cables. It provides a static interface between structural

Contact Us

For more information, pricing, or custom solutions, please contact us:

Website: <https://activa.net.pl>

Email: sales@activa.net.pl

Phone: +48 662 748 193

Address: ul. Cybernetyki 7B, 02-677 Warsaw, Poland

This document is for informational purposes only. Specifications subject to change without notice.

