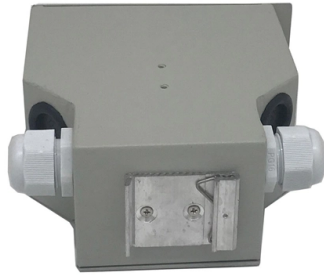


## How long should cold aisle server racks be ventilated



### Overview

For efficient airflow, data centers typically maintain approximately 3 feet of cold aisle space and about 4 feet for hot aisles. By separating airflow paths, organizations can achieve improved cooling efficiency, lower energy consumption, and more consistent rack temperatures. Arranging racks into a hot aisle/cold aisle configuration (discussed at right) is a cooling best practice that has been implemented to improve the efficiency of raised floor data centers. However, the hot air can diffuse into the cold air near the top of the racks and on the end of the cold aisles. Advantages  
Disadvantages In hot aisle containment, the hot aisle is enclosed instead. Without good ventilation, servers may slow down or shut off, leading to costly downtime. Ventilation is more than just moving air in and out; it involves managing airflow, adjusting the room layout, and choosing the right. Maximum Aisle Length: When equipment cabinets form a continuous row, the aisle length should not exceed 16 meters. This pressurized cool air rises through perforations in floor tiles into cold. Improve server rack airflow and efficiency with practical strategies like hot aisle-cold aisle layout, blanking panels, cable management, proper spacing, and cooling.

## Article Content

### A Guide to Hot and Cold Aisle Containment for Optimizing Server

Racks should be arranged so that the front sides (intake side) of the racks face each other, forming a cold aisle. Conversely, the back sides (exhaust side) of the racks should face each other to form a

### Hot Aisle / Cold Aisle Cooling Explained

Keep an eye out for our next posts about Cold / Hot aisle containment systems and In Row cooling. In the mean time if you would like advice about how to cool your server racks, how to

### 5 Ways to Improve Server Rack Airflow and Cooling Efficiency

By implementing structured airflow strategies, organizations can improve cooling efficiency, system stability, and equipment lifespan. This article explores five practical ways to

### Cooling Strategies for Server Rooms | Donwil

Hot aisle/cold aisle configuration can help regulate your server room temperature and ensure your equipment is working efficiently. Ensure Proper Airflow in Server Rooms  
Ensuring proper airflow is

### Hot vs. Cold H

Hot aisle or cold aisle containment is a layout design for server racks and other computing data center. The aisle/cold aisle containment configuration is to conserve energy and lower cooling costs by

### Containment Aisle FAQs | Server Room Environments

Cold aisle containment is designed to eliminate hot spots in server racks, allows more space within the server rack to be used and reduce overall cooling costs. Cold-aisle containment can be used

### FOCUSED COOLING USING COLD AISLE CONTAINMENT

Arrange server racks in a hot aisle/cold aisle configuration. Most equipment manufactured today is designed to draw in air through the front and exhaust it out the rear.

### Hot Aisle vs Cold Aisle Containment Explained (Data Center Cooling ...

In this guide, we'll break down how hot aisle and cold aisle configurations work, what containment systems do, and why airflow management is critical in today's high-density data centers.

### IMPROVING DATA CENTER EFFICIENCY AND CAPACITY WITH AISLE

Recently the concept of aisle containment began to take hold as a viable tool to help address these challenges. Aisle containment works to increase the efficiency and capacity of a data center by

How to Cool a Server Room or Network Closet | Enconnex

Ideally, small server room and network closet cooling should not depend upon office HVAC systems. One option is a ceiling- or wall-mount air conditioning unit positioned such that

## Contact Us

For more information, pricing, or custom solutions, please contact us:

Website: <https://activa.net.pl>

Email: [sales@activa.net.pl](mailto:sales@activa.net.pl)

Phone: +48 662 748 193

Address: ul. Cybernetyki 7B, 02-677 Warsaw, Poland

This document is for informational purposes only. Specifications subject to change without notice.

