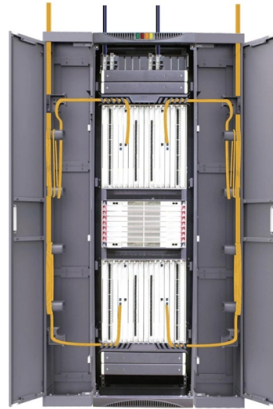


# Inspection and maintenance of lighting distribution box



## Overview

Before the rainy season, a systematic inspection and maintenance of the lighting electrical ready board box should be carried out, with a focus on sealing reinforcement, drainage dredging, and lightning protection testing to prevent faults such as rainwater infiltration, short. Before the rainy season, a systematic inspection and maintenance of the lighting electrical ready board box should be carried out, with a focus on sealing reinforcement, drainage dredging, and lightning protection testing to prevent faults such as rainwater infiltration, short. Comprehensive inspection and maintenance of lighting electrical ready boards before the rainy season arrives Before the rainy season, a systematic inspection and maintenance of the lighting electrical ready board box should be carried out, with a focus on sealing reinforcement, drainage dredging. They distribute and control electrical power to lighting, mechanical services, and essential equipment across commercial, industrial, and residential facilities. Failure of these systems can result in unplanned outages, equipment damage, fire hazards, and safety risks for building occupants. Power distribution & circuit protection depend on it. LV intrusive switchboards accept power from the utility & generator & distribute it to building circuits. Look for any signs of burnt or damaged wiring. This should be performed periodically by a qualified electrician. A standard maintenance checklist includes: Visual Inspection: Checking for signs of corrosion, physical damage, or overheating. If you're responsible for maintaining electrical systems, you know that distribution boxes are the unsung heroes of power management. But here's the thing—they can't take care of themselves.

## Article Content

### Electrical Distribution Maintenance Fundamentals

Electrical distribution equipment manufacturers' service offers and their diagnostic solutions are often the best and most cost-efficient corrective solutions thanks to: Figure 2 Maintenance maturity curve •

### Electrical Inspection Checklists

Electrical Inspection Checklists This pdf contains 77 electrical inspection checklists taken from the 2014 Electrical Inspection Manual with Checklists. The checklists are in PDF format and can be completed

### How To Conduct A Comprehensive Inspection And Maintenance Of

Before the rainy season, a systematic inspection and maintenance of the lighting electrical ready board box should be carried out, with a focus on sealing reinforcement, drainage dredging, and lightning

### SPECIFICATION FOR THE MAINTENANCE AND UPGRADE OF HIGHMAST LIGHTING ...

All mountings shall be of rigid construction and fixings for control gear units and terminal boxes shall be such that those units can be readily removed and are easily accessible for maintenance purposes

### electrical distribution box preventive maintenance check list

Inspect for any physical damage to the enclosure. Ensure that all labels and warning signs are legible. Examine for any signs of overheating or arcing. Verify that the box is securely mounted and that

### Lighting Maintenance Maintenance Checklist Tool

Regular maintenance helps prevent lighting failures, ensures energy efficiency, and extends the lifespan of lighting fixtures. By addressing maintenance tasks promptly, you can create a well-lit and safe

### Low Voltage Distribution Operation & Maintenance Manual Panel Boards

All safety codes, safety standards and/or regulations must be strictly observed in the installation, operation and maintenance of this equipment. Only authorized personnel should be allowed to work

### What Maintenance Procedures Ensure a Long Lifespan for a Lighting ...

Cleaning: Carefully removing dust and debris from inside the enclosure using non-conductive tools and low-pressure air, with power disconnected. Keeping an accurate log of all

### Regular maintenance checklist: ensuring safe and reliable operation of ...

We've all seen it—that weird burning smell in older buildings or the flickering lights that become "normal." So let's roll up our sleeves together and run through everything that keeps these

How does the distribution box manufacturer maintain the distribution ...

The maintenance of the distribution box is very important to ensure the stable operation of the power system. Here are some key steps manufacturers can take:  
Regular inspection: Visual inspection is

## Contact Us

For more information, pricing, or custom solutions, please contact us:

Website: <https://activa.net.pl>

Email: [sales@activa.net.pl](mailto:sales@activa.net.pl)

Phone: +48 662 748 193

Address: ul. Cybernetyki 7B, 02-677 Warsaw, Poland

This document is for informational purposes only. Specifications subject to change without notice.

