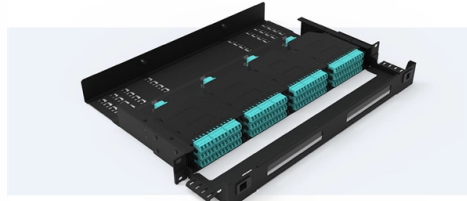


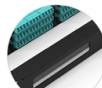
North Asia Transportation Cable Tray Specifications

Pre-Terminated Patch Panel

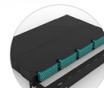
Standard 19" width Max 144 fibers in 1U MPO/Fusion Dual-Purpose



Removable Cable Management Tray



Transparent Front Cover



High-Quality Matte Coated Steel

Overview

Materials used are Steel, Hot dipped galvanized steel, Aluminium, Stainless, Epoxy painted steel or FRP fiberglass. Light gauge perforated trays supporting light cables. Sizes range from 50 mm wide to 900 mm wide and 2. Eaton's CoSPEC Specifier Center is your one-stop, comprehensive resource for CAD, BIM, PDMS, and graphical design content. Utilize the catalog below to select, view, and download design content on available B-Line series products in nearly 100 different formats. All illustrations, descriptions and technical information included in this document are provided as indications and can cable trays are equivalent. The mechanical and electrical characteristics, tests, certifications, overall quality management, recommendations mentioned. certification requirements and applications. Whether specifying a major new project, refurbishing existing facilities or doing the engineering, procurement and construction (EPC) for your end user, with T&B Cabletray, ABB offers reliable so utions du g conforming to ASTM A123 & ISO 1461 : m. ventilation to heat producing cable such as power communication and other with the same or different width of the cable run. These fitting are including: elbow, horizontal cross, vertical inside. Cable support systems have been installed in almost every facet of industry from simple installations supporting cables around a factory wall to major projects such as power stations, oil refineries, aluminium smelters, coal loaders, petro-chemical refineries, grain terminals, major commercial. Constructed from single sheet of perforated metal. They are convenient for cables which require both a degree of protection from external damage and some ventilation.

Article Content

Microsoft Word

Cable Tray Types & Specification Perforated Cable Trays Features Moderate ventilation with added cable support advantage Thickness available 1.2mm, 1.6mm, 2.0mm, 2.5mm, 3.0mm.

Cable Tray Specification Guide | Types, Materials, Sizes

Cable Tray Specification In the realm of infrastructure development, the efficient management of electrical conduits plays a pivotal role. This section delves into the intricacies of selecting and

Perforated and solid cable tray

Learn how we've joined forces with Siemens Energy to fast-track data center construction and reduce deployment timelines by up to two years. Eaton's CoSPEC Specifier Center is your one-stop,

Codes and Standards | Cable Tray Institute

The Cable Tray Institute is making available the current edition of this practical guide for the proper installation of aluminum or steel cable tray systems. These guidelines will be useful to engineers,

GUIDE CABLE TRAYS TECHNICAL

NEMA VE 1-2017 Specifies requirements for metal cable trays and associated fittings designed for use in accordance with the rules of Canadian Electrical Code, Part I and the National Electrical Code®

Cable Tray Specification Overview

This document provides a general specification for cable trays for an electrical project. It outlines technical requirements, codes and standards, site conditions,

Cable Tray In Asia, Cable Tray Manufacturers Suppliers Asia

Galvanized Cable Tray As part of our excellent Cable Tray Range, we are proud to offer super strong Galvanized Cable Trays. These specially tailored Galvanized Cable Trays are manufactured using

Product Catalogue Cable Management Solutions

Delivering engineered solutions in cable management ABB manufacturers a comprehensive range of cable tray systems and solutions including cable ladder, perforated tray, channel tray and metal

Microsoft Word

3.1 Cable trays & accessories shall be of two types, namely ladder type and perforated type. Technical particulars are specified in data Sheet-A and drawings enclosed with this specification.

Cable Tray for PDF

Cable Trays have become an integral part of industrial and commercial construction by offering quick, economical and flexible solutions. Cable trays are capable of supporting all types of wiring such as

Cable Tray Technical Guide A practical guide to product selection and ...

A practical guide to product selection and installation This guide for engineers and installers has been developed by ABB as a practical reference regarding cable tray characteristics, installation, and

Full cable tray systems specification document

B. Cable tray systems are defined to include, but are not limited to straight sections of [ladder type] [trough type] [solid bottom type] [channel type] cable trays, bends, tees, elbows, drop-outs, supports

CABLE TRAY, CABLE LADDER, CABLE TRUNKING CATALOGUE

Length (W): 200. ng to tray height. Depth (D): 1.2mm, 1.5mm, Material: Mild steel sheet / PO steel sheet. Constructed Type: MIG welding. er coating / Hot ip galvanize / Bare galvan 4 Hanger Support.

Cable Tray Technical Guide A practical guide to product selection and ...

In designing supports for a cable tray system, consideration should be given to the loads associated with future cable additions and any additional loading that may be applied to the cable tray system (e.g.,

HOW TO CHOOSE THE RIGHT CABLE TRAY

A cable tray is a system used to support and route cables and wiring in an industrial environment. Cable trays are used in various installations, including commercial construction, data centers, computer

Cable Tray Specification Overview | PDF | Specification

This document provides a general specification for cable trays for an electrical project. It outlines technical requirements, codes and standards, site conditions,

Cable Tray

All HNVN cable trays are fabricated from Prime quality Sheet. All HNVN cable trays are manufactured in accordance with the the requirements of International Standard IEC 61537. For ease of ordering,

Cable tray, Ladder, wireway

We offering of cable management options offers smart solutions for any industrial or commercial cable system. Easy to install and customize, cable tray, cable ladder,

Contact Us

For more information, pricing, or custom solutions, please contact us:

Website: <https://activa.net.pl>

Email: sales@activa.net.pl

Phone: +48 662 748 193

Address: ul. Cybernetyki 7B, 02-677 Warsaw, Poland

This document is for informational purposes only. Specifications subject to change without notice.

